



FRENCH FITNESS

FF-E620T

**FRENCH FITNESS E620T ELLIPTICAL W/15"
TOUCH CONSOLE (NEW)**

ASSEMBLY MANUAL



! CAUTION

Read all precautions and instructions in this manual before using this equipment.

FEATURES

- Brand: French Fitness
- Touchscreen console: built for a more premium, connected cardio experience
- Connected features: apps, online entertainment access, screen mirroring, and virtual scenery
- Training modes: HRC plus four preset programs: Hill, Interval, Cardio, and Fat Burn
- Power requirement: requires external power
- Max user weight: 160 kg / 353 lbs
- Product dimensions: 742 x 2113 x 1610 mm

TECH SPECS

- Product Name: French Fitness E620T Elliptical w/ 15.6" TFT Touchscreen Console
- Product Code: E620T
- Certification: CE
- Max User Weight: 160 kg / 352 lbs
- Electrical Receptacle & Plug: 220V-240V
- Power Supply: 60W
- Brake Type: Self Powered Hybrid Brake
- Resistance Brake Power: 350W
- Resistance Levels: 25
- Stride Length: 533 mm / 21"
- Pedal: Pedal with cushioned gel pads
- Pedal Spacing: 1"
- Step-up Height: 190 mm / 7.5"
- Handlebar Control: Handlebar Control; ABS+TPU coated handlebars
- Console Display: 15.6" TFT
- Console Readouts: Resistance, time, distance, calories, HR, RPM
- Language: EN/CN/FR/DE/ES/PT/IT/RU/JP/KR
- Metric/English: Metric&English
- Entertainment: Multiple built-in apps
- Programs: 5
- HR Monitor: Contact&Telemetry
- Accessory Storage: Yes
- USB Data Exchange: Yes
- Multi-language Display: Yes
- Gross Weight: 174.9 kg / 385.6 lbs
- Net Weight: 118 kg / 260.1 lbs
- Product Dimensions: 742 x 2113 x 1610 mm
- Product Dimensions (Imperial): 29.2" x 83.2" x 63.4"

WARRANTY

- **Lifetime Frame Warranty**
- **10 Years Parts Warranty***
- **1 Year Labor Warranty***

*What is covered? See complete [French Fitness Warranty](#) details.

Table Of Contents

IMPORTANT SAFETY INSTRUCTIONS.....	4
SUBASSEMBLY PARTS LIST	6
HARDWARE LIST.....	7
ASSEMBLY.....	8
EXPLODED VIEW AND PARTS LIST.....	13
• BRAKE ASSY	13
• LEFT PEDAL BRACKET ASSY	14
• RIGHT PEDAL BRACKET ASSY.....	15
• CROSS BRACKET ASSY, SHAFT ASSY.....	16
• TIGHTENER ASSY, HANDLE BRACKET ASSY	17
• MAIN FRAME ASSY.....	18
• UPRIGHT FRAME ASSY.....	21
• LEFT HANDLE BRACKET ASSY	22
• RIGHT HANDLE BRACKET ASSY	23
• CONSOLE ASSY.....	24
• OVERALL	26

Important Safety Instructions

WARNING! The safety of the product can be maintained only if it is examined regularly for damage and wear. See preventive maintenance section for details.

WARNING! Heart rate monitoring systems may be inaccurate. Over exercising may result in serious injury or death. If you feel faint stop exercising immediately.

LOCATION

1. Keep the area around the product clear of any obstructions, including walls and furniture. Provide at least three feet of clearance behind the unit.
2. Do not use the product outdoors, near swimming pools, or in areas of high humidity.
3. Do not allow other people to interfere in any way with the user or equipment during workout.
4. this appliance is not intended for use by persons (including children) with reduced physical, sensory or mental capabilities, or lack of experience and knowledge, unless they have been given supervision or instruction concerning use of the appliance by a person responsible for their safety.
5. children should be supervised not to play with the appliance.
6. The product should only be used on a level surface and is with 0.6 meters space around the product.

OPERATION

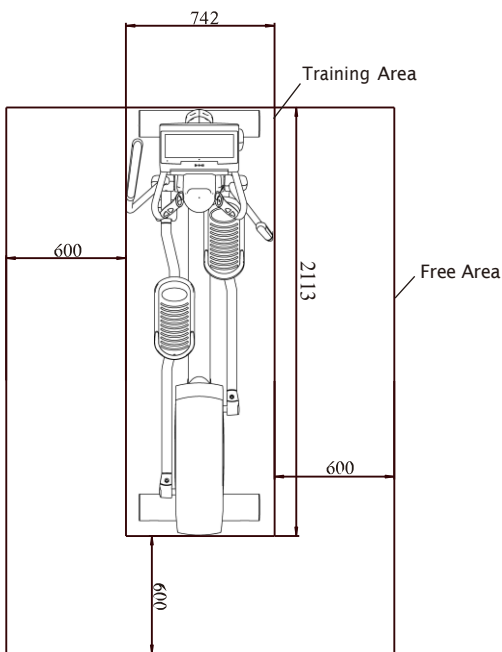
1. Always follow the console instructions for proper operation.
2. Do not reach into, or underneath, the unit, and do not tip the unit on its side during operation.
3. Never insert objects into any opening of the Bike. If any object fall into this equipment, carefully retrieve it while the unit is not in use. If the object can't be reached, please contact customer services.
4. Never place any containers filled with liquids on the unit, except in the accessory tray or water bottle holder. Containers should be covered with lids.
5. Wear shoes with rubber or high-traction soles. Do not wear shoes with high heels, leather shoes, slippers, or spikes. Make sure no sharp stuff is embedded in the soles.

Important Safety Instructions

6. Do not use the bike with bare feet.
7. Keep all loose clothing, shoelaces, and towels away from moving parts.
8. Take extra caution when stepping on or off the bike.
9. Never face backward while using the bike.
10. the appliance is only to be used with the unit provided.
11. If the cord set is damaged, it must be replaced by a special cord set available from the manufacturer or its service agent.

Save these instructions for future reference

Training Area and Free Area



Specifications

Class: SB

Maximum User Weight: 160kg/ 353lbs

Product Dimension: 742*2113*1610mm

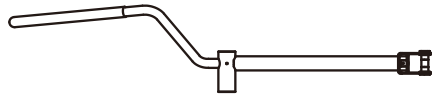
Product Total Surface: 742*2113mm

Product Total Mass: 118kg/ 260lbs

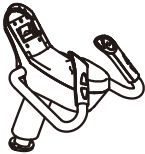
SUBASSEMBLY PARTS LIST



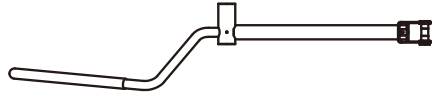
Console



Right Handle Bracket Assy



Upright Frame ASSY



Left Handle Bracket Assy



Left Top Cover



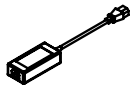
Right Top Cover



Rear and Front Cover



Rotating Cover



Filter Components



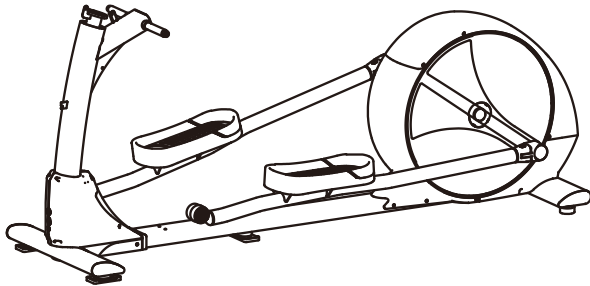
Front Top Cover



Hardware



Owner's Manual



Main Frame Assy

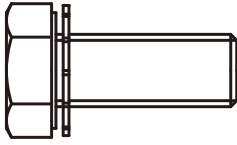


Power Cable

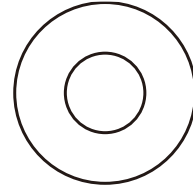


Adaptor

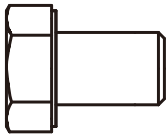
HARDWARE LIST



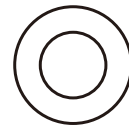
four M10*25 Hex Head Bolt (#15)



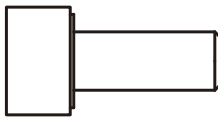
two $\Phi 11 * \Phi 25 * 2$ Washer (#18)



two M10*15 Hex Head Bolt (#17)



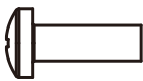
four $\Phi 9 * \Phi 16 * 1.6$ Washer (#20)



four M8*20 Socket Head Bolt (#19)



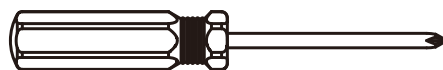
four $\Phi 8$ Spring Washer (#21)



thirteen M5*15 Screw (#16)



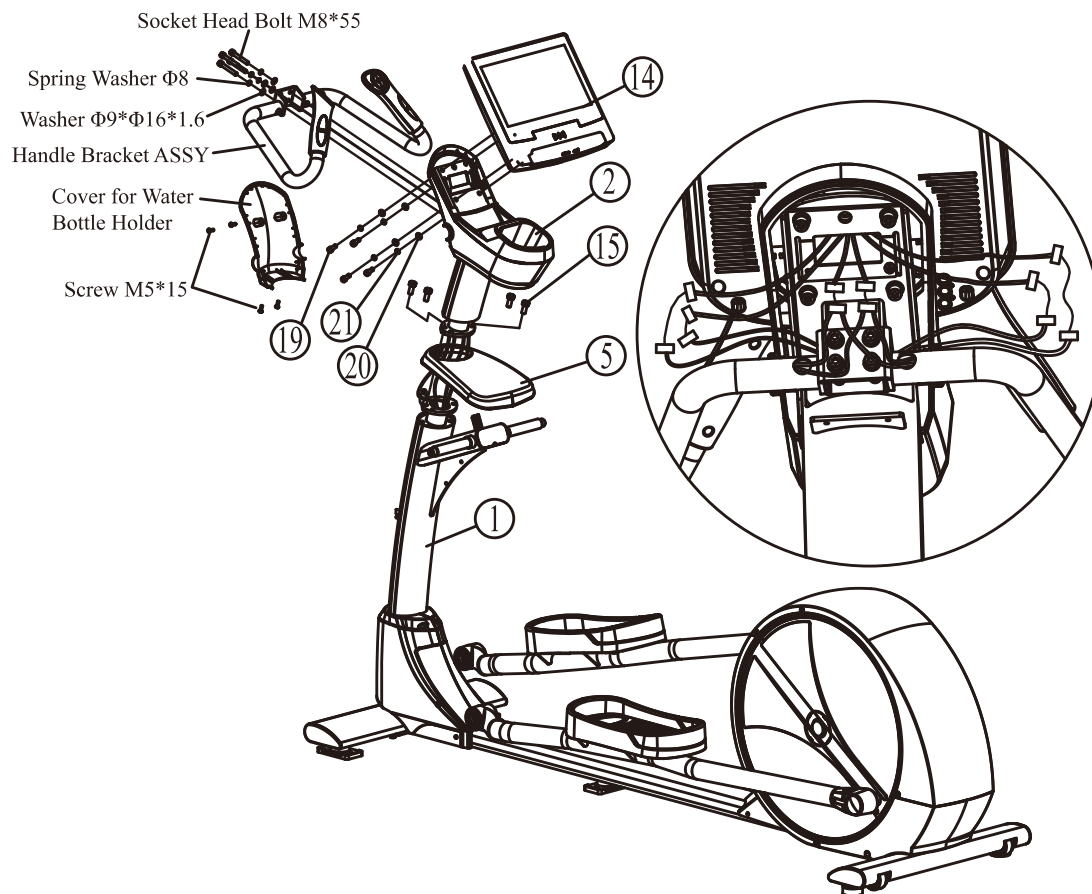
one S=6 Hex Key



One Screw Driver

Diameter of bolt (mm/inch)	M6(1/4")	M8(5/16")	M10(3/8")	M12(1/2")	M16(5/8")
Tightening torque (N.m)	9~12	22~30	45~59	78~104	193~257
Operational methods for adult men	The strength of the wrist	The strength of the wrist and forearm	The strength of the entire arm	The strength of the arm and upper body	with all strength

ASSEMBLY

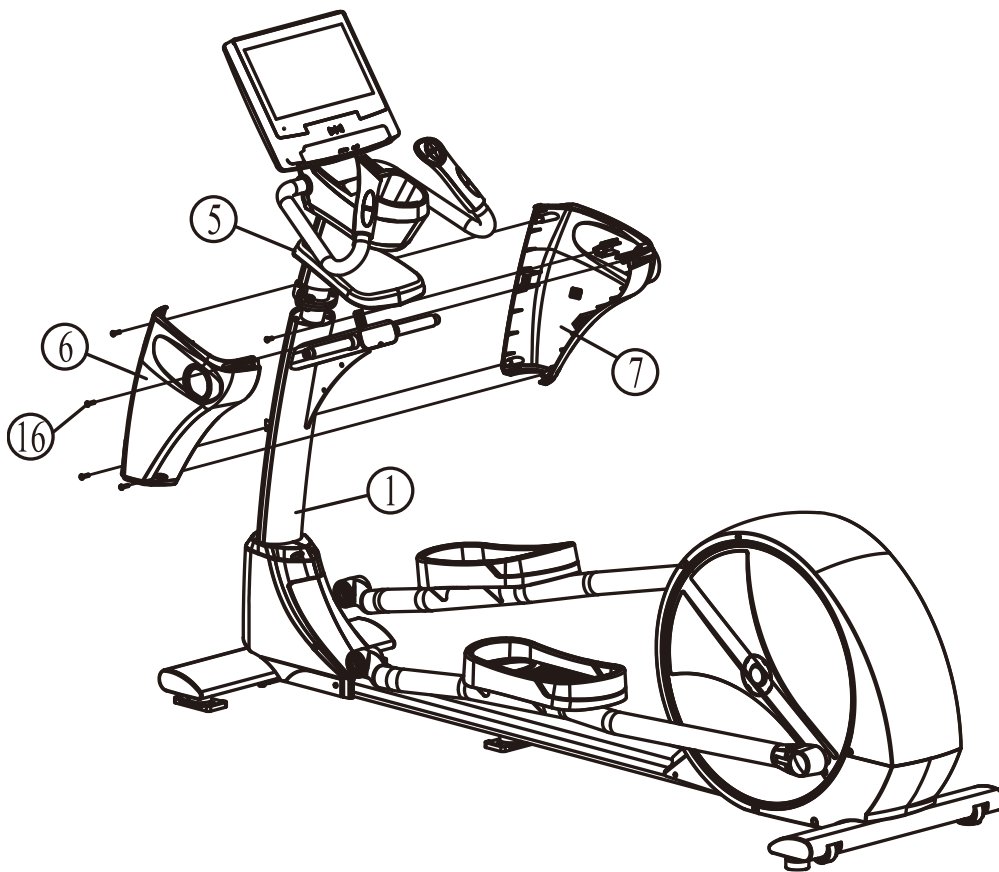


Step 1

1. Take apart the Cover for Water Bottle Holder from Upright Frame ASSY (#2).
2. Take apart the Handle Bracket ASSY from Upright Frame ASSY (#2).
3. Attach Front Top Cover (#5) to Upright Frame ASSY (#2).
4. Run the Data Power Cord through the Upright Frame ASSY (#2) using the Leading Wire.
5. Attach Upright Frame ASSY (#2) to Main Frame ASSY (#1), using:
Four M10*25 hex head bolt (#15)
6. Attach Handle Bracket ASSY to Upright Frame ASSY (#2), using:
Four M8*55 Socket Head Bolt
Four Φ8 Spring Washer
Four Φ9*Φ16*1.6 Washer
7. Attach the Console (#14) to Main Frame Assembly (#1), using:
Four M8*20 Socket Head Bolt (#19)
Four Φ9*Φ16*1.6 Washer (#20)
Four Φ8 Spring Washer (#21)
8. respectively Connect the Data Power Cord.
9. Attach Cover for Water Bottle Holder to Upright Frame ASSY (#2), using:
Four M5*15 Screw

NOTE: Be careful not to pinch any wires while attaching the Upright Frame.

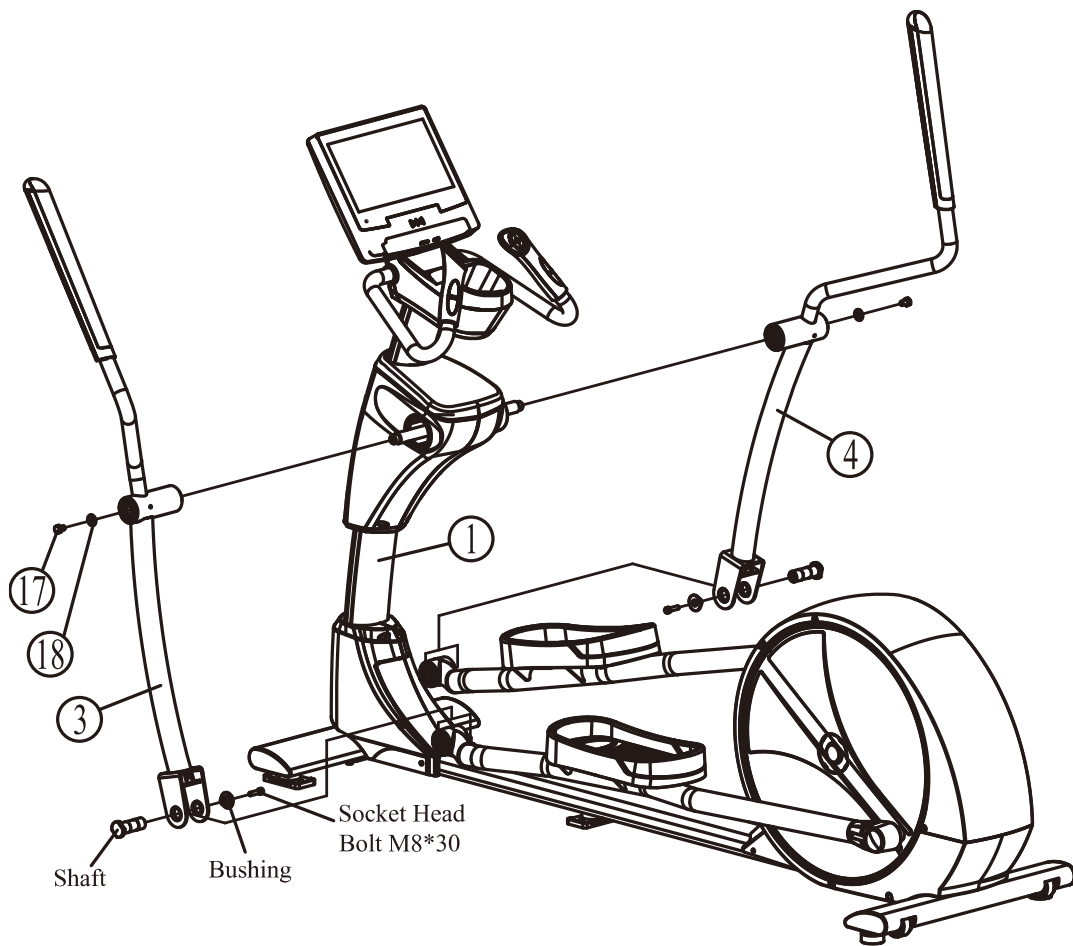
ASSEMBLY



Step 2

1. Attach Right Top Cover (#7) to Main Frame Assy, using:
One M5*15 Screw (#16)
2. Attach Left Top Cover (#6) to Main Frame Assy, using:
Four M5*15 Screw (#16)
3. Attach Front Top Cover (#5) to Right Top Cover (#7) and Left Top Cover (#6).

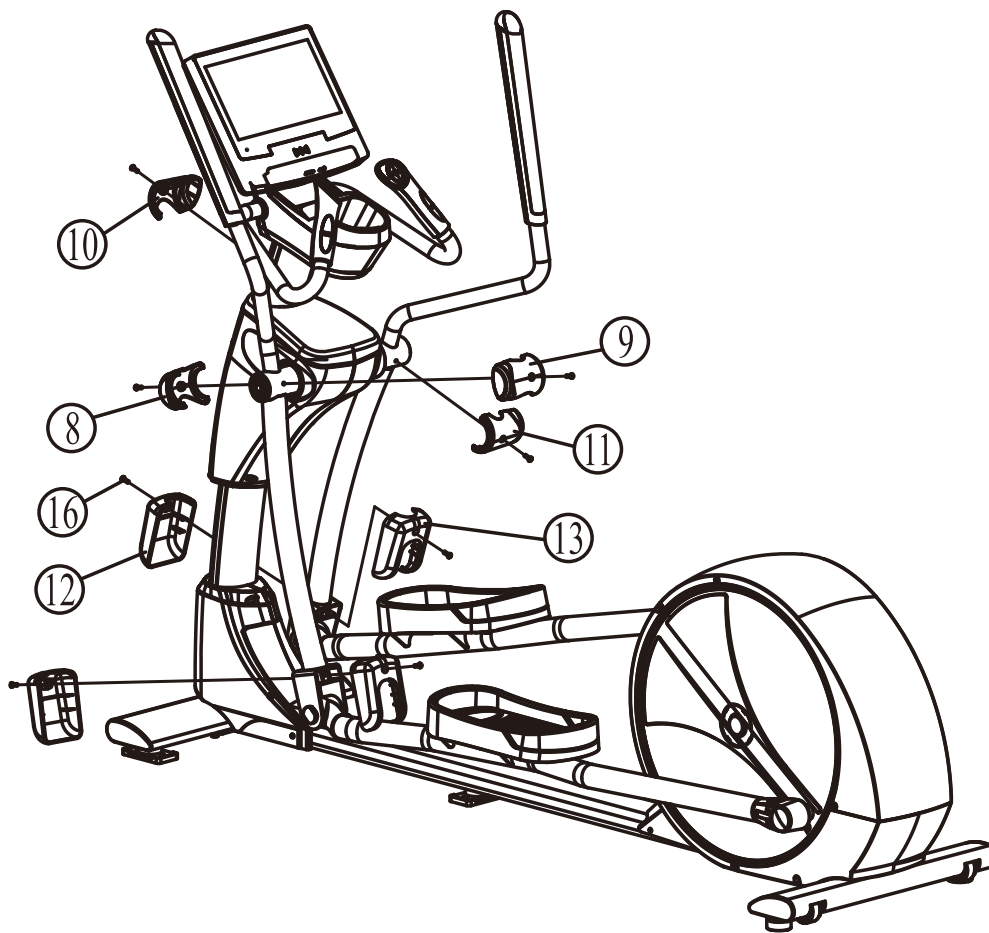
ASSEMBLY



Step 3

1. Take apart Shaft, Bushing, Socket Head Bolt from Left Handle Bracket ASSY (#3).
2. Attach Left Handle Bracket ASSY (#3) to Main Frame ASSY, using:
 - One M10*15 Hex Head Bolt (#17)
 - One $\Phi 11*\Phi 25*2$ Washer (#18)
 - One Shaft
 - One Bushing
 - One M8*30 Socket Head Bolt
3. Take apart Shaft, Bushing, Socket Head Bolt from Right Handle Bracket ASSY (#4).
4. Attach Right Handle Bracket ASSY (#4) to Main Frame ASSY, using:
 - One M10*15 Hex Head Bolt (#17)
 - One $\Phi 11*\Phi 25*2$ Washer (#18)
 - One Shaft
 - One Bushing
 - One M8*30 Socket Head Bolt

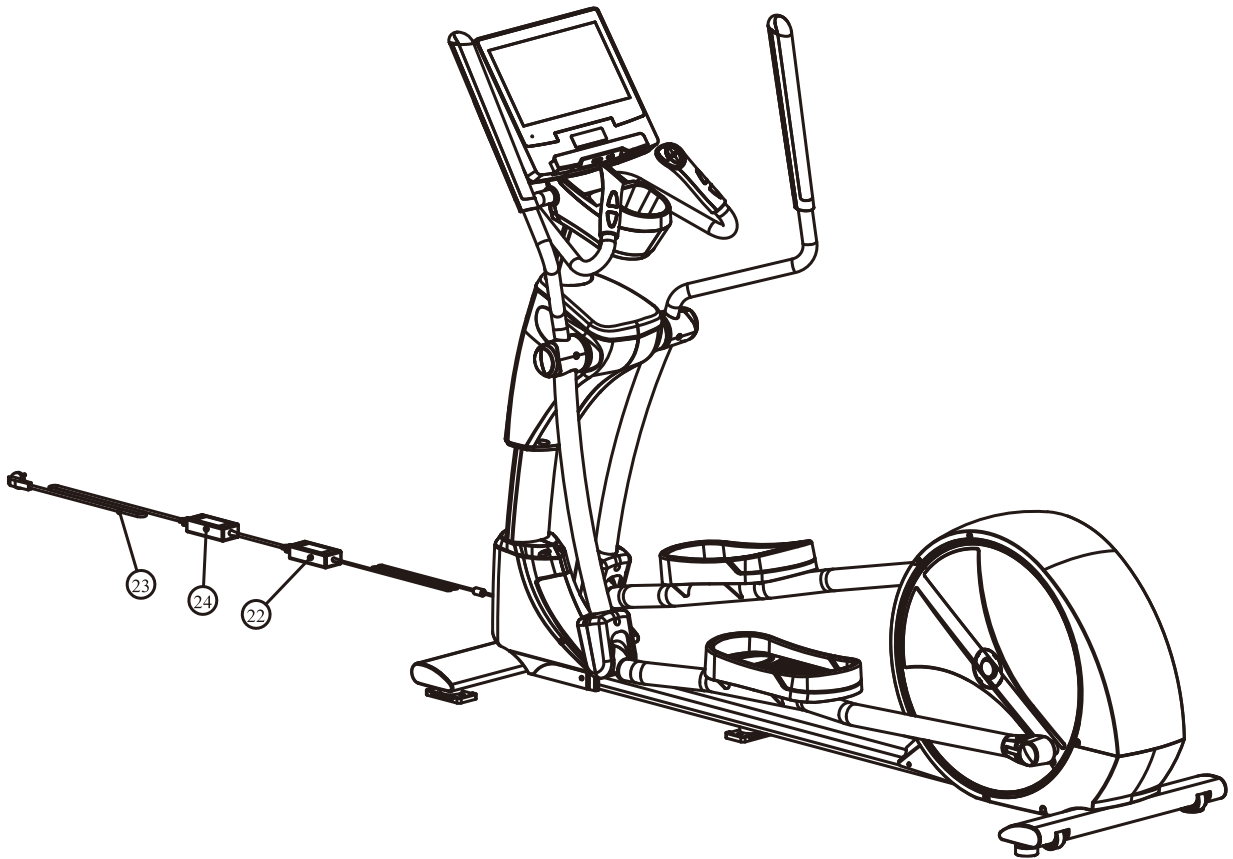
ASSEMBLY



Step 4

1. Attach Left Rotating Cover1 (#8) and Left Rotating Cover2 (#9) to Left Handle Bracket ASSY, using:
two M5*15 Screw (#16)
2. Attach Front Cover (#12) and Rear Cover (#13) to Left Handle Bracket ASSY, using:
two M5*15 Screw (#16)
3. Attach Right Rotating Cover1 (#10) and Right Rotating Cover2 (#11) to Left Handle Bracket ASSY, using:
two M5*15 Screw (#16)
4. Attach Front Cover (#12) and Rear Cover (#13) to Right Handle Bracket ASSY, using:
two M5*15 Screw (#16)

ASSEMBLY

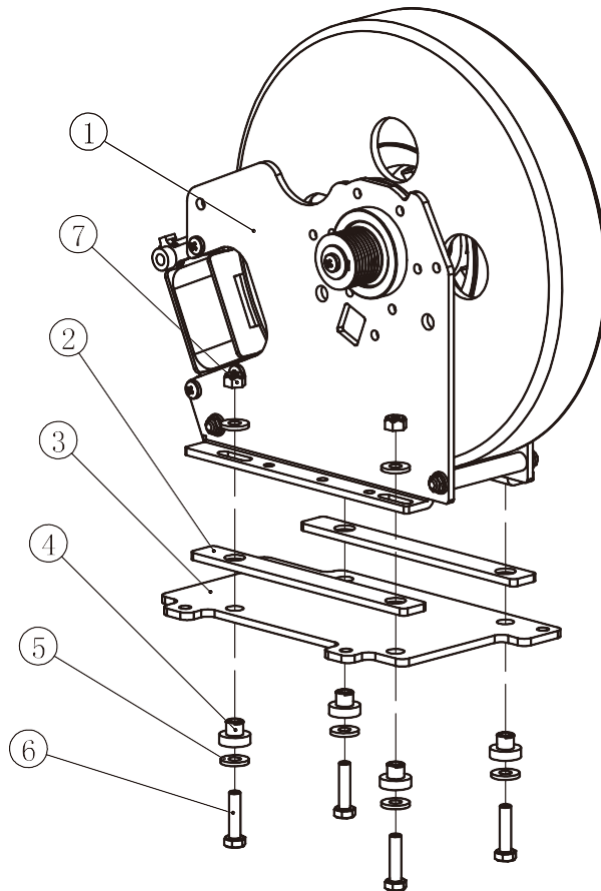


Step 5

Attach Adaptor (#22) and Filter Components (#24) and Power Cable (#23).

Exploded View and Parts List

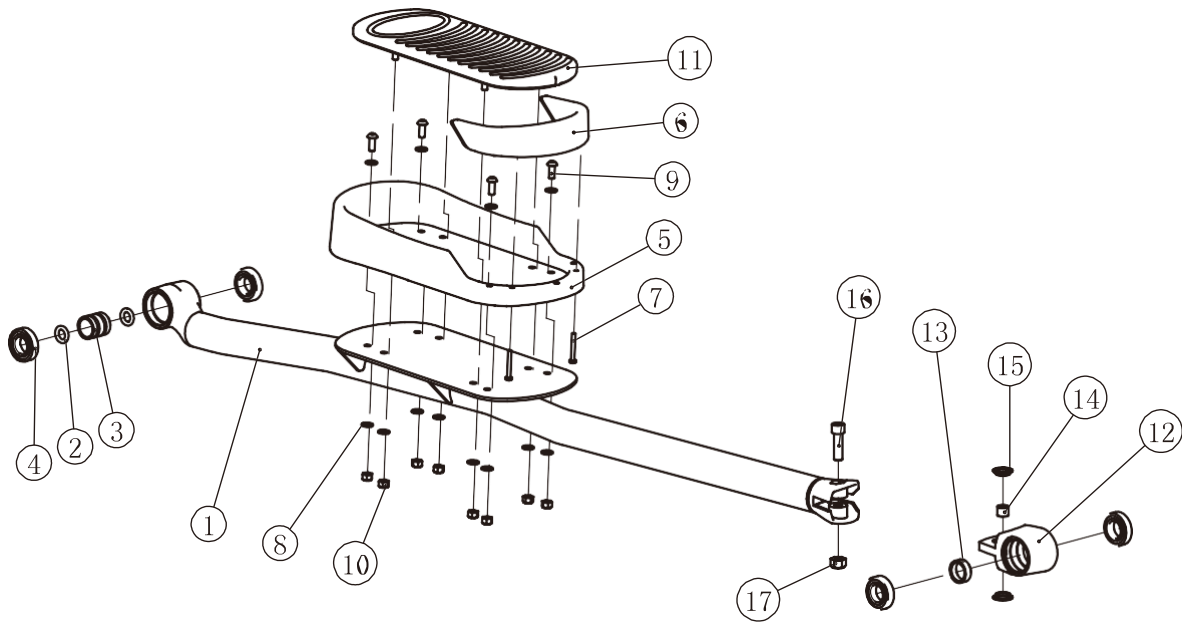
Brake ASSY



Grade No.	Part No.	Description	QTY
1.15.1	D75V1-1500-MC	Brake	1
1.15.2	U7B3700	insulation plate:brake	2
1.15.3	PE350D9500	Transition Plate	1
1.15.4	U7B3800	insulation space:brake	4
1.15.5	DQ6DS2A	Washer $\Phi 6.6 \times \Phi 15 \times 2$	8
1.15.6	GB5781M6*25DS20	Hex Head Bolt M6*25	4
1.15.7	NM6DS2	Nylon Insert Lock Nut M6	4
1.15.8	L1500AL9396-3-3-MC	Wire for Generator	1
1.15.9	L1500STDCY2F-AI9396-2-MC	Wire for Braker	1

Exploded View and Parts List

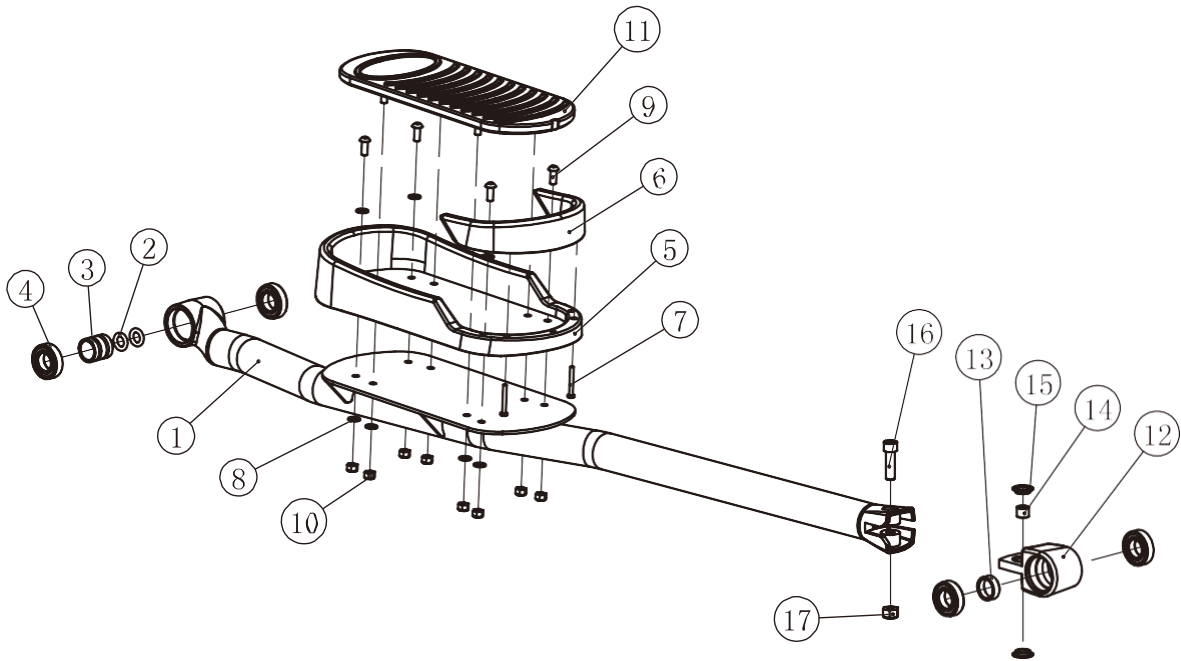
Left Pedal Bracket ASSY



Grade No.	Part No.	Description	QTY
1.46.1	RE3000300	Left Pedal Bracket	1
1.46.2	GB3452.125*5.3	Rubber Sealing Ring $\Phi 25 \times 5.3$	2
1.46.3	PE350D9700	Sleeve $\Phi 32 \times \Phi 26 \times 34$	1
1.46.4	GB2766005-2RSC3NBK	Bearing 6005	4
1.46.5	RE7004200	Pedal	1
1.46.6	RE7004300	Holder for Pedal	1
1.46.7	GB818M5*40DS2	Screw M5*40	2
1.46.8	GB958DS20	Washer $\Phi 9 \times \Phi 16 \times 1.6$	12
1.46.9	PNLM8*20DS20	Button Head Bolt M8*20	4
1.46.10	NM8DS2	Nylon Insert Lock Nut M8	8
1.46.11	RE7005700	Pedal Forming	1
1.46.12	RE500C8100	Bearing Housing	1
1.46.13	RE500C8000	Sleeve $\Phi 32 \times \Phi 26 \times 11.3$	1
1.46.14	TBT1400	Bushing $\Phi 16 \times 13$	1
1.46.15	TBT5500	Plastic Bushing	2
1.46.16	GB70M12*40DHS20	Socket Head Bolt M12*40	1
1.46.17	NM12DHS2	Nylon Insert Lock Nut M12	1

Exploded View and Parts List

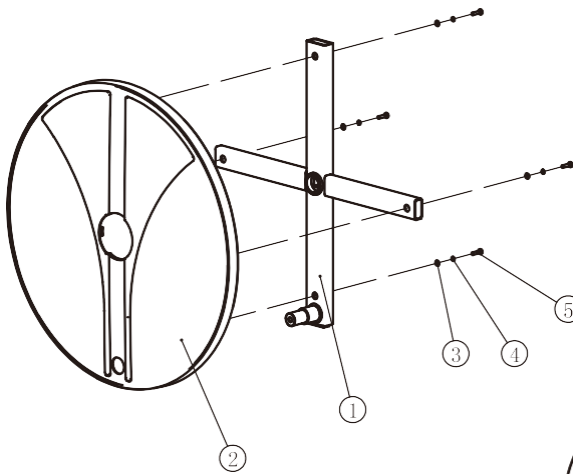
Right Pedal Bracket ASSY



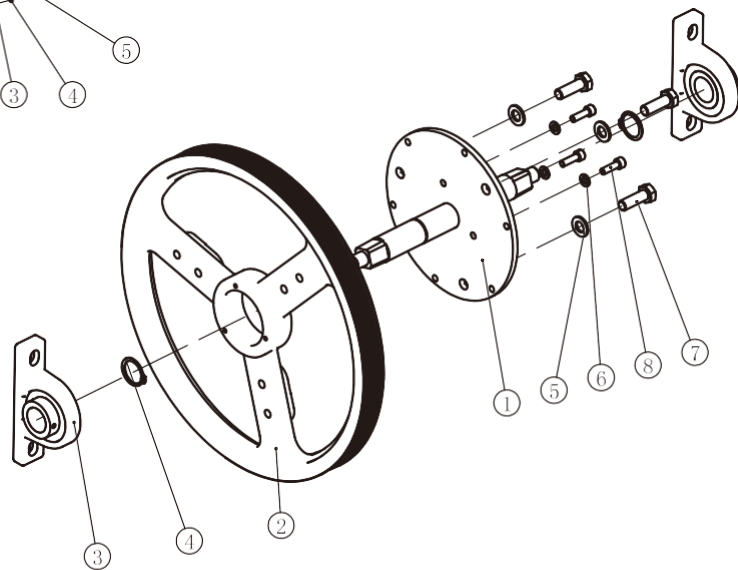
Grade No.	Part No.	Description	QTY
1.47.1	RE3000400	Right Pedal Bracket	1
1.47.2	GB3452.125*5.3	Rubber Sealing Ring $\Phi 25 \times 5.3$	2
1.47.3	PE350D9700	Sleeve $\Phi 32 \times \Phi 26 \times 34$	1
1.47.4	GB2766005-2RSC3NBK	Bearing 6005	4
1.47.5	RE7004200	Pedal	1
1.47.6	RE7004300	Holder for Pedal	1
1.47.7	GB818M5*40DS2	Screw M5*40	2
1.47.8	GB958DS20	Washer $\Phi 9 \times \Phi 16 \times 1.6$	12
1.47.9	PNLM8*20DS20	Button Head Bolt M8*20	4
1.47.10	NM8DS2	Nylon Insert Lock Nut M8	8
1.47.11	RE7005700	Pedal Forming	1
1.47.12	RE500C8100	Bearing Housing	1
1.47.13	RE500C8000	Sleeve $\Phi 32 \times \Phi 26 \times 11.3$	1
1.47.14	TBT1400	Bushing $\Phi 16 \times 13$	1
1.47.15	TBT5500	Plastic Bushing	2
1.47.16	GB70M12*40DHS20	Socket Head Bolt M12*40	1
1.47.17	NM12DHS2	Nylon Insert Lock Nut M12	1

Exploded View and Parts List

Cross Bracket ASSY



Shaft ASSY

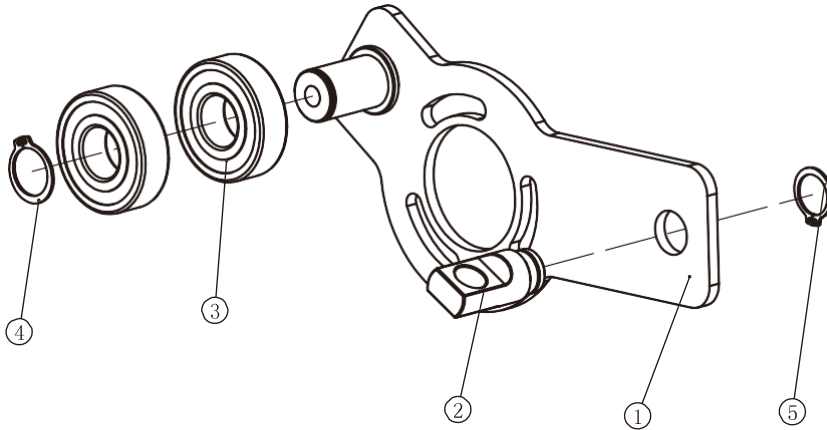


Grade No.	Part No.	Description	QTY
1.43.1	RE500C0900	Cross Bracket	1
1.43.2	RE7003200	Disk Cover	1
1.43.3	GB955DS2	Washer $\Phi 5.3 \times \Phi 10 \times 1$	4
1.43.4	GB935DS12	Spring Washer $\Phi 5$	4
1.43.5	GB818M5*20DHS2	Screw M5*20	4

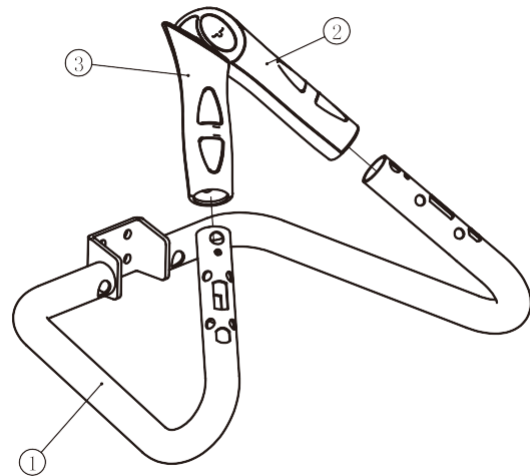
Grade No.	Part No.	Description	QTY
1.24.1	RE7000800	Shaft	1
1.24.2	RE7001200	Belt Pulley	1
1.24.3	UP205	Pillow Block Bearing	2
1.24.4	GB894.125FH12	External Retaining Ring $\Phi 25$	2
1.24.5	GB9510DHS2	Washer $\Phi 11 \times \Phi 20 \times 2$	3
1.24.6	GB956DS2	Washer $\Phi 6.6 \times \Phi 12 \times 1.6$	3
1.24.7	GB5781M10*30DS20NL	Hex Head Bolt M10*30	3
1.24.8	GB70M6*20DS20NL	Socket Head Bolt M6*20	3

Exploded View and Parts List

Tightener ASSY



Handle Bracket ASSY



Grade No.	Part No.	Description	QTY
1.20.1	RE500C1100	Tightener	1
1.20.2	PE350D10200	Tension Shaft Adjustable Axle	1
1.20.3	GB2766204-2RSC3NBK	Bearing 6204	2
1.20.4	GB894.120FH12	External Retaining Ring $\Phi 20$	1
1.20.5	GB894.117FH12	External Retaining Ring $\Phi 17$	1

Grade No.	Part No.	Description	QTY
2.2.1	RE3000800	Handle Bracket	1
2.2.2	X13V3	Pulse Plate	1
2.2.3	X12V3	Pulse Plate	1
2.2.4	L750ST0-M43025-4	Handle Pulse Cable	1
2.2.5	L900M43020-M35155-4	Switching Cable	1

Exploded View and Parts List

Main Frame ASSY

Grade No.	Part No.	Description	QTY
1.1	RE950E0100	Main Frame	1
1.2	ECU7P3500	Nut,PA6	11
1.3	CG60007700	Foot	3
1.4	GB41M10DS2	Nut M10	4
1.5	PE3001700	Adjustbale Foot	2
1.6	RE3004800	Wheel	2
1.7	GB70M10*50DS20	Socket Head Bolt M10*50	2
1.8	RE7002600	Plug 1	2
1.9	RE7002700	Plug 2	2
1.10	L4100M43025-XHB-6	Lower Cable of Console	1
1.11	RE7005200	Square Nut	2
1.12	GB9510DS20	Washer $\phi 11*\phi 20*2$	10
1.13	GB5781M10*15DS20NL	Hex Head Bolt M10*15	2
1.14	GB5781M10*40DS20	Hex Head Bolt M10*40	2
1.15	D75V1-1500ASSY	Brake ASSY	1
1.16	DQCH02-SBD	Magnet Cord	1
1.17	GB956DS2	Washer $\phi 6.6*\phi 12*1.6$	4
1.18	GB936DS12	Spring Washer $\phi 6$	4
1.19	GB70M6*15DS4	Socket Head Bolt M6*15	4
1.20	RE500C11ASSY	Tightener ASSY	1
1.21	RU7004800	Busing	3
1.22	GB935DS12	Spring Washer $\phi 5$	3
1.23	GB70M5*20DS20	Socket Head Bolt M5*20	3
1.24	RE30005ASSY	Shaft ASSY	1
1.25	DXD510J8A	Poly-v Belt	1
1.26	GB70M10*80DHS20	Socket Head Bolt M10*80	4
1.27	NM10DS2	Nylon Insert Lock Nut M10	4
1.28	TBT0800	Tightening Nut	1
1.29	GB70M8*25DS20	Socket Head Bolt M8*25	1
1.30	NM8DS2	Nylon Insert Lock Nut M8	1
1.31	GB41M8DS2	Hex Nut M8	1
1.32	U7B4000	Insulation spacer	1
1.33	GB958DS20	Washer $\phi 9*\phi 16*1.6$	1

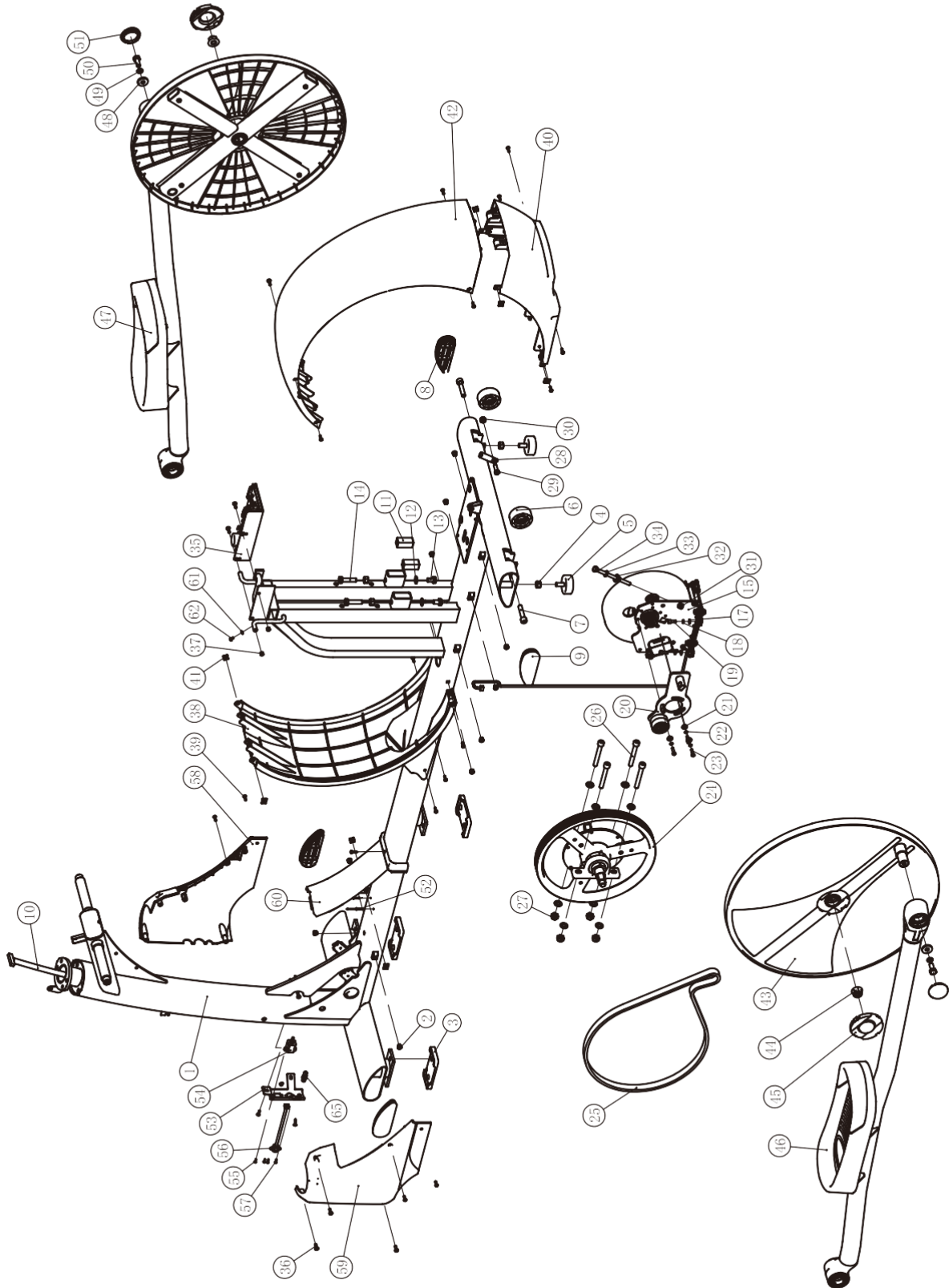
Exploded View and Parts List

Main Frame ASSY

Grade No.	Part No.	Description	QTY
1.34	GB5780M8*120*45DS20	Hex Head Bolt M8*120	1
1.35	C66	Controller	1
1.36	GB818M5*15DHS20	Screw M5*15	8
1.37	GB41M5DS2	Hex Nut M5	2
1.38	RE7003600	Mid Rear Cover 3	1
1.39	GB845ST4.2*16DHS	Screw ST4.2*16	22
1.40	RE7003500	Mid Rear Cover 2	1
1.41	B306700	Screw Clip	8
1.42	RE7003400	Mid Rear Cover 1	1
1.43	RE500C09ASSY	Cross Bracket ASSY	2
1.44	GB6187M14DY2	Flange Nut M14*1.5	2
1.45	RE7003300	Little Disk Cover	2
1.46	RE500C03ASSY	Left Pedal Bracket ASSY	1
1.47	RE500C04ASSY	Right Pedal Bracket ASSY	1
1.48	DQ10DHS2E	Washer $\phi 28 \times \phi 10.5 \times 5$	2
1.49	GB9310DS12	Spring Washer $\phi 10$	2
1.50	GB5781M10*25DS20NL	Hex Head Bolt M10*25	2
1.51	RE7004100	Plug	2
1.52	GB126183.2*15N11	blind rivets	2
1.53	RE950E5000	Fixturer	1
1.54	L1800RJ45-RJ45Z-8	lower cable,for internet	1
1.55	GB819M3*10DHS2	Aross Recessed Countersunk Head Screw ,M3*10	2
1.56	Z38	Plug	1
1.57	GB846ST2.9*13DHS	Screw,ST2.9*13	2
1.58	RE7003900V2	Right Front Bottom Cover	1
1.59	RE7003800V2	Left Front Bottom Cover	1
1.60	RE3002400	Bottom Cover	1
1.61	GB862.24DS12	Whasher, $\phi 4$	1
1.62	GB6560M4*8DSG	Screw,M4*8	1

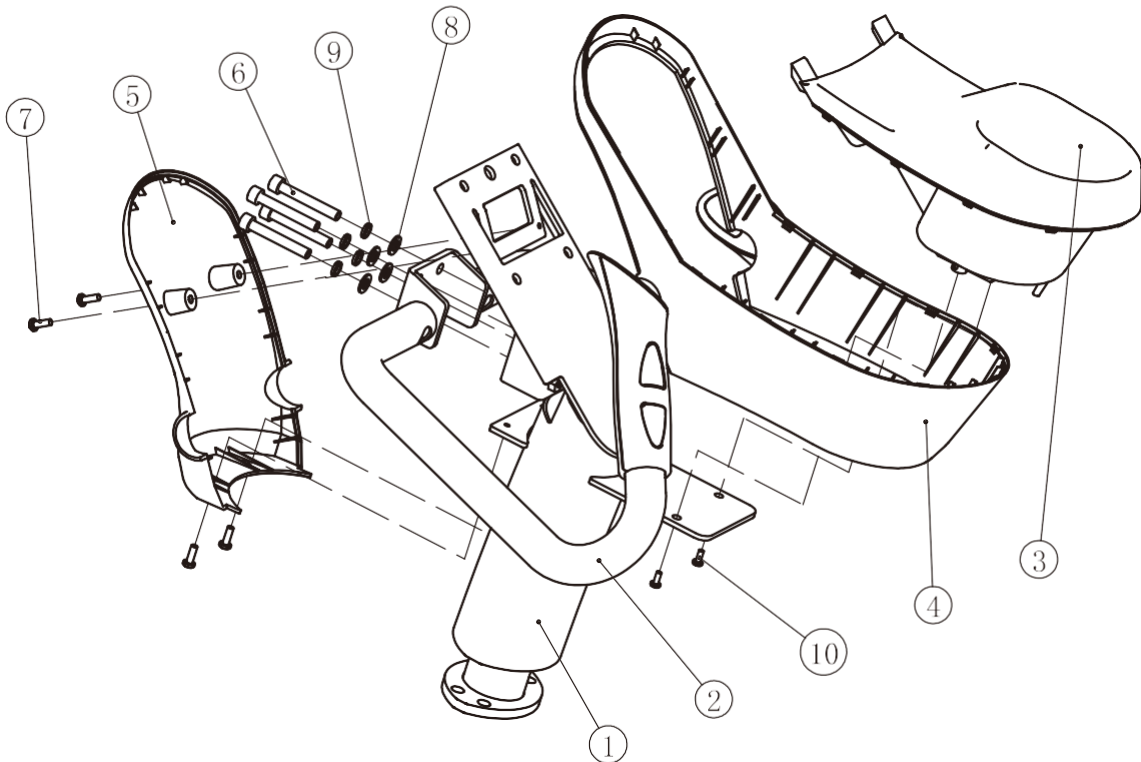
Exploded View and Parts List

Main Frame ASSY



Exploded View and Parts List

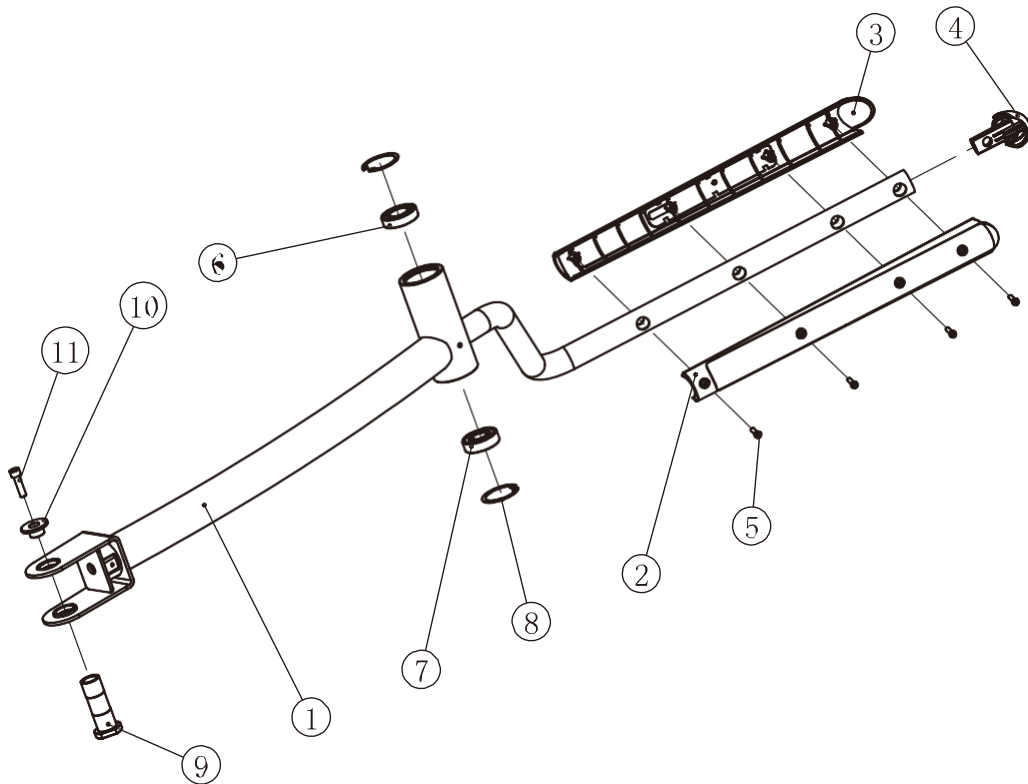
Upright Frame ASSY



Grade No.	Part No.	Description	QTY
2.1	RE900B0200	Upright Frame	1
2.2	EVOE1PLUS06ASSY	Handle Bracket ASSY	1
2.3	RE3002500	Water Bottle Holder	1
2.4	RE3002600	Water Bottle Holder Bracket	1
2.5	RE3002700	Cover for Water Bottle Holder	1
2.6	GB70M8*55DS20	Socket Head Bolt M8*55	4
2.7	GB818M5*15DHS20	Screw M5*15	4
2.8	GB958DS20	Washer $\Phi 9 \times \Phi 16 \times 1.6$	4
2.9	GB938DS12	Spring Washer $\Phi 8$	4
2.10	GB818M4*10DHS2	Screw M4*10	2
2.11	ZX1*2	Leading wire	1.4

Exploded View and Parts List

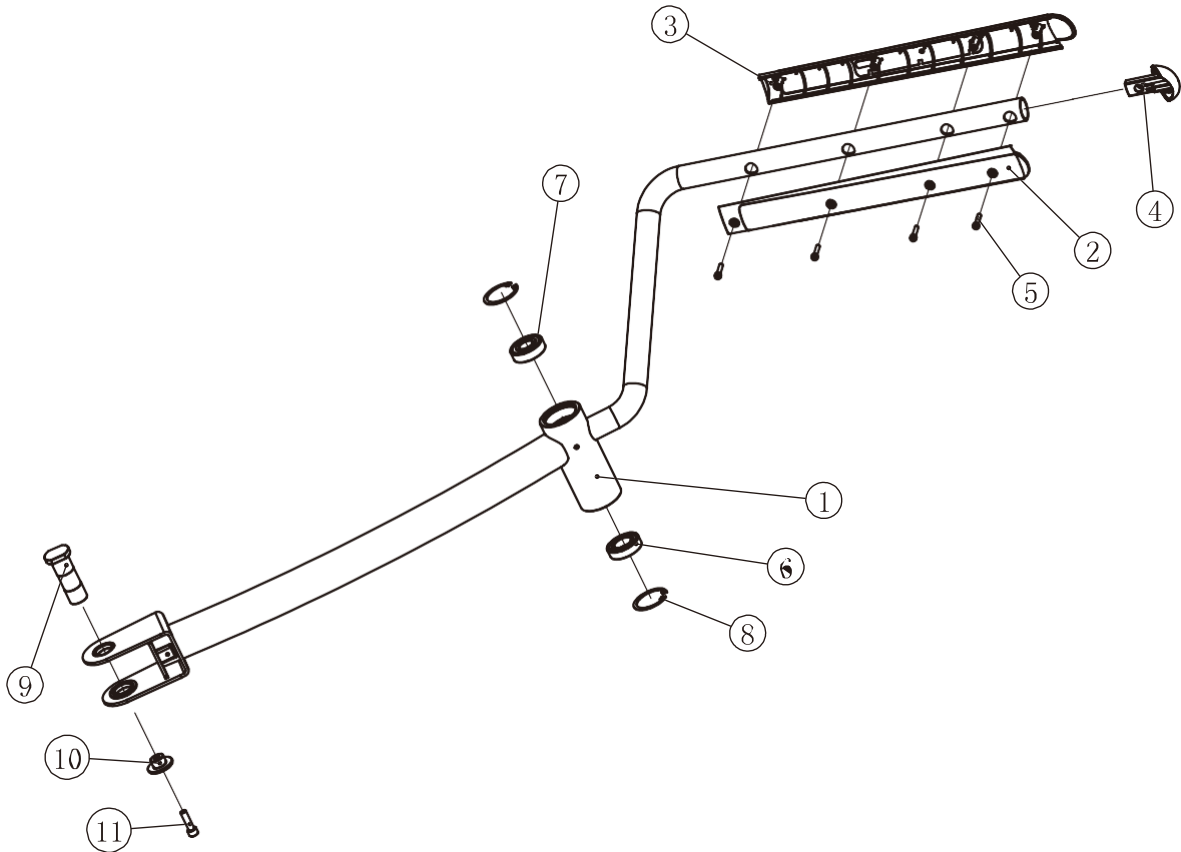
Left Handle Bracket ASSY



Grade No.	Part No.	Description	QTY
3.1	RE900B0300	Left Handle Bracket	1
3.2	RE7005400V1	Front Handle	1
3.3	RE7005500V1	Back Handle	1
3.4	RE7005600	Plug of Handle	1
3.5	GB70M5*25N19	Socket Head Bolt M8*25	4
3.6	GB2766005-2RSC3NBK	Bearing 6005	1
3.7	GB2766204-2RSC3NBK	Bearing 6204	1
3.8	GB893.147FH12	Internal Retaining Rings Φ 47	2
3.9	PE350D9800	Shaft	1
3.10	PE350D9900	Bushing	1
3.11	GB70M8*30FH21NL	Socket Head Bolt M8*30	1

Exploded View and Parts List

Right Handle Bracket ASSY



Grade No.	Part No.	Description	QTY
4.1	RE900B0400	Right Handle Bracket	1
4.2	RE7005400V1	Front Handle	1
4.3	RE7005500V1	Back Handle	1
4.4	RE7005600	Plug of Handle	1
4.5	GB70M5*25N19	Socket Head Bolt M8*25	4
4.6	GB2766005-2RSC3NBK	Bearing 6005	1
4.7	GB2766204-2RSC3NBK	Bearing 6204	1
4.8	GB893.147FH12	Internal Retaining Rings $\Phi 47$	2
4.9	PE350D9800	Shaft	1
4.10	PE350D9900	Bushing	1
4.11	GB70M8*30FH21NL	Socket Head Bolt M8*30	1

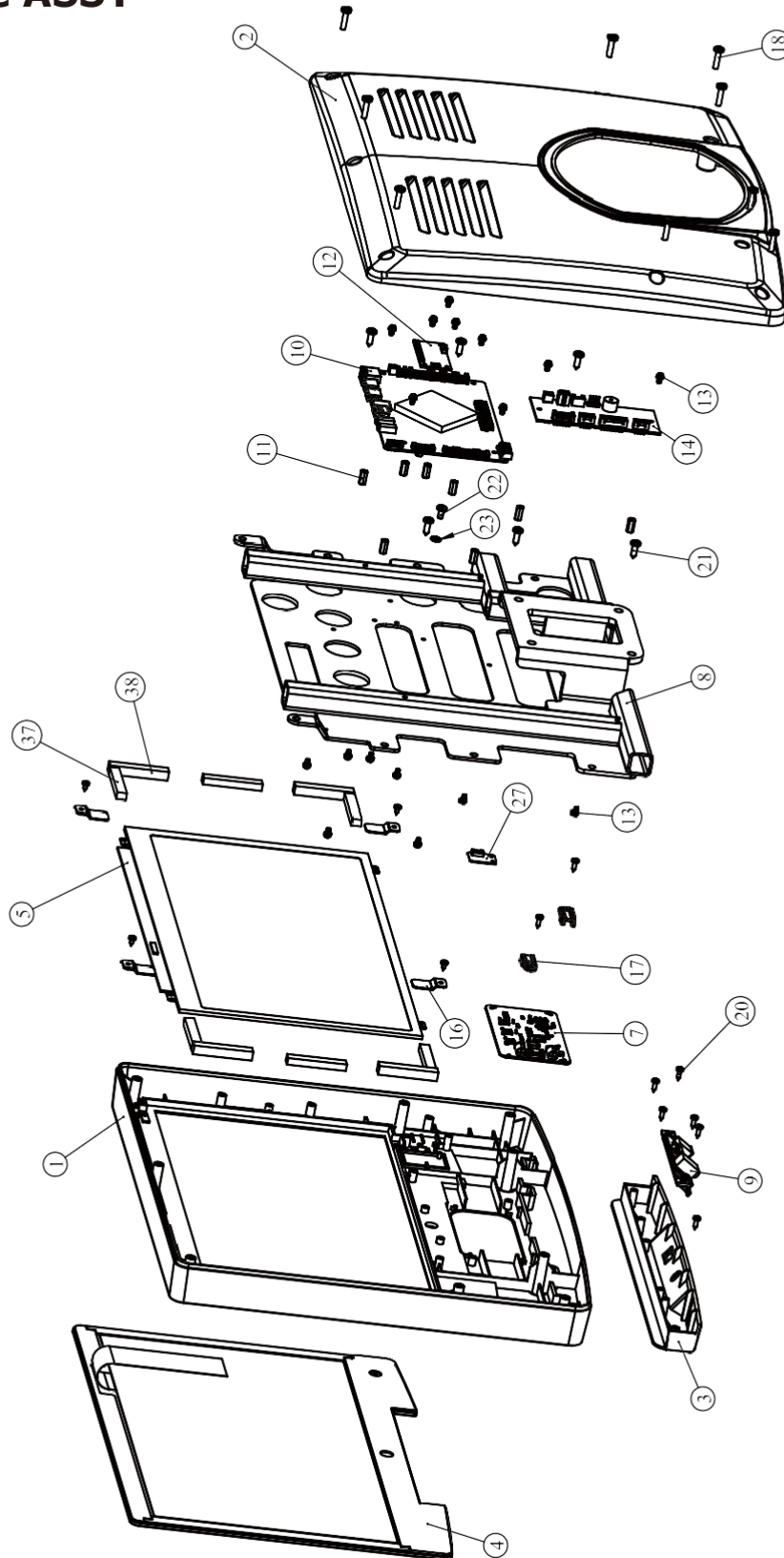
Exploded View and Parts List

Console ASSY

Grade No.	Part No.	Description	QTY
14.1	RU960DZB01	front cover,for console	1
14.2	RU960DZB02	rear cover,for console	1
14.3	RU960DZB03	lower cover,for console	1
14.4	CM156-R970H	touch panel	1
14.5	TFT156-AC2990ZNB	21.5-inch display screen	1
14.6	L300XHB-XHB-4A	wireless charging connection cable	1
14.7	B350	wireless charging module	1
14.8	RR960B0700	console support frame	1
14.9	AC4050B5500ASSY	USB board assy	1
14.10	B299-RE970H	mainboard	1
14.11	AC2990ZNB0300	copper nut M3	9
14.12	B313-AC2990ZNB	touch control board	1
14.13	PMS-SWFW3*6	cross recessed pan head screw assembly M3*6	18
14.14	B312-R960B	central control board	1
14.15	L200H2506-M43020-8	upper section of central control line	1
14.16	AC2990ZNB0200	panel holder	4
14.17	AC8007600	board holder	2
14.18	GB818M4*16DHS2	phillip screw,M4*16	9
14.19	GB845ST2.9*6.5DS	phillip screw,ST2.9*6.5	4
14.20	GB845ST2.9*9.5DS	phillip screw,ST2.9*9.5	8
14.21	GB845ST4.2*13DHS	phillip screw,ST4.2*13	6
14.22	GB6560M4*8DSG	phillip screw,M4*8	1
14.23	GB862.24DS12	serrated lock washers Φ 4	1
14.24	L320-395G179X30P3930000	EDP screen data cable	1
14.25	L340-395GH20004DM227000	touch panel control cable	1
14.26	L300SH-YP35-USB-12A	USB headphone adapter cable	1
14.27	GGMZ03-DC	photosensitive module	1
14.28	L350PH-TH-4C	photosensitive module adapter cable	1
14.29	TX04-DC	WIFI antenna	3
14.30	L300RJ45-RJ45B-DC	network cable W/Socket	1
14.31	L280XHB-PH-6	power data communication cable	1
14.32	L200XHB-M43020-4	heart rate cable	1
14.33	L200XHB-M5559-2	power cable	1
14.34	L200M43025-4	resistance cable	1
14.35	L200JD43-JD-1-04	earth wire	1
14.36	L700JD43-SH62002-1P	earth wire	1
14.37	AC4050B5800	foam pad 1	6
14.38	AC4050B5900	foam pad 2	4
14.39	DQLY03-4050C	bluetooth module	1
14.40	L250PH-TJC3B-5A	bluetooth module connection cable	1

Exploded View and Parts List

Console ASSY



Exploded View and Parts List

Overall

Item No.	Part No.	Description	QTY
1	RE970H-WX01ASSY	Main Frame ASSY	1
2	RE97002ASSY	Upright Rrame ASSY	1
3	RE900B03ASSY	Left Handle Bracket ASSY	1
4	RE900B04ASSY	Right Handle Bracket ASSY	1
5	RE500C1700	Front Top Cover	1
6	RE500C1800	Left Top Cover	1
7	RE500C1900	Right Top Cover	1
8	RE3002000	Left Rotating Cover1	1
9	RE3002100	Left Rotating Cover2	1
10	RE3002200	Right Rotating Cover1	1
11	RE3002300	Right Rotating Cover2	1
12	RE3002800	Front Cover	2
13	PE3502700P11C	Rear Cover	2
14	RE970H-WXDZBASSY	Console	1
15	GB9074.16M10*25DS20	hex head bolt,M10*25	4
16	GB818M5*15DHS20	Screw M5*15	13
17	GB5781M10*15DS20NL	Hex Head Bolt M10*15	2
18	DQ10DS2B	Washer $\phi 11*\phi 25*2$	2
19	GB70M8*20DS20	Socket Head Bolt M8*20	4
20	GB958DS20	Washer $\phi 9*\phi 16*1.6$	4
21	GB938DS12	Spring Washer $\phi 8$	4
22	SPQ5A-2	Adaptor	1
23	A01-4	Power Cable	1
24	Q19ZJ-US	Filter components	1

Exploded View and Parts List

Overall

